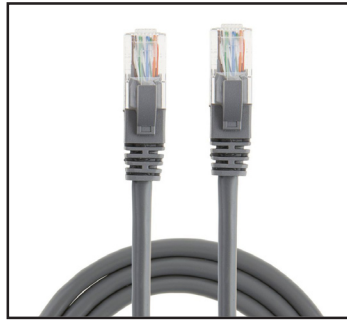


CATEGORY 6 UNSHIELDED PATCHCORD



FEATURES

- CE, Lead-free & RoHS2 compliant.
- ISO/IEC 11801, CENELEC EN 50173-1 and IEC 60603-7
- IEC 60603-7-2 and IEC 60603-7-4
- Compatible for T568A and T568B wiring schemes

SPECIFICATIONS

Material	Cable	(7/0.18 CU+0.008) 24 AWG*4Pair + Filler + PVC/ LSZH Jacket
	Connector	RJ45 (8P8C) Male type,
	Insulation	Clear polyester, UL94V-2
	Contacts	Brass, Gold plated G/F
	PVC molding	PVC
Electrical	Current Rating	1.5 Amp
	Insulation Resistance	500 Megohm min.
	Contact Resistance	20 Milli-ohm max
	Dielectric Strength	1000 VAC (RMS)
	Voltage	30 VAC max.
Mechanical	Insertion life	750 mating cycles
	Pull Force	20 lbs (89N)
Environmental	Temperature	-10°C ~ 60°C
	Humidity	10% ~ 90%RH

PART NUMBER GENERATOR

INTEL6UUPPC	Category 6 Unshielded PVC Patchcord
INTEL6UULPC	Category 6 Unshielded LSOH Patchcord